

RFUF

RETIRED FACULTY OF THE UNIVERSITY OF FLORIDA, INC.

January 2009

Volume 33, Number 2

Board of Directors

2008-2009

Robert S. Mansell
PRESIDENT

Dennis McConnell
PRESIDENT ELECT

John L. Foltz
SECRETARY

Dale Canelas
TREASURER

Raymond C. Andrew
PAST PRESIDENT

Jacqueline B. Orlando
Arnold C. Penland
Louise Rothman
Ann P. Smith
DIRECTORS

Roy J. Bolduc
Robert A. Ramey
MEMBERSHIP

Madelyn M. Lockhart
NEWSLETTER EDITOR

Spring Luncheon

**Paramount Plaza Hotel
and Suites
April 1, 2009
11:45 a.m.**

President's Message

Welcome to the spring session for RFUF. Christmas and New Year's Day have passed since the fall session. Join me as we look forward to the new year with optimism and expectation.

The first weekly Wednesday meeting is scheduled for January 7 at the Harn Museum of Art and the last on March 5. The end of the session will be highlighted by the Spring Luncheon on noon Wednesday, April 1 at the Paramount Resort. Dianna Morgan, Chairperson of the UF Board of Trustees is the featured speaker and the title of her talk is "University of Florida - Our Challenges and Opportunities".

Program Chair and President-Elect Dennis McConnell has arranged another outstanding group of speakers for the Spring session. Speakers with diverse topics come from both University of Florida and Gainesville communities. Interactive question/answer periods between speakers and the audience typically enhance even the best of presentations. These programs entertain, challenge, and inform us. Be sure to encourage Dennis by sharing your feedback regarding talks.

Several people provide a number of important services that make the organization function smoothly. Special thanks go to Madelyn Lockhart for preparing informative fall and spring newsletters, Ed Petkus for acquiring name badges for members, Roy Bolduc for providing technical assistance for speakers, Arnold Penland and Roy Bolduc for distributing parking permits, Hart Stringfellow for injecting humor into each meeting, Ed Petkus for purchasing tasty doughnuts, and Glenda Elder for preparing great coffee. By the way, Glenda is looking for a partner to help with coffee preparation.

During the last session William Van Dyke resigned as treasurer in order to complete a book and Dale Canelas volunteered to become the current treasurer. Special thanks go to William for providing four years of superb service to the organization and to Dale for stepping forward to assume that important position.

Members know that meetings offer opportunity to meet with friends, make new acquaintances, and be mentally stimulated/entertained by informative talks on a range of topics. **Unfortunately RFUF is a "treasure chest" that is often unknown and/or undiscovered among most of our fellow UF retirees.** Let me challenge each of us to share the benefits for RFUF membership with potential members. **Creative ideas for increasing the visibility of RFUF among current and future retirees would be welcomed.** Thanks for the opportunity to serve this organization.

Robert Mansell

P rograms Spring 2009

Speakers for 10:00 AM meetings in the **Chandler Auditorium in the Harn Museum of Art**
[Coffee and doughnuts at 9:30 AM]:


- January 7** **JASON STEUBER**, Cofrin Curator of Asian Art, Samuel P. Harn Museum of Art
“Asian Art and the Samuel P. Harn Museum: Past, Present and Future”
- January 14** **SIRAJ SHARIG**, President Storter Childs Printing Co., Gainesville, FL
“Pakistan: A Concise History”
- January 21** **MARK FLANNERY**, Professor and Eminent Scholar, Warrington College of Business Administration, UF
“The Recent Financial Crisis”
- January 28** **FRANCES “JACK” PUTZ**, Professor, Botany, University of Florida
“Global Changes”
- February 4** **RICHARD LIND**, Assistant Professor, Mechanical/Aerospace Engineering, UF
“Biological Concepts for Micro-aircraft”
- February 11** **LESLIE BRAM**, Associate Vice President and COO, UF Foundation
“History and Fundraising at the University of Florida”
- February 18** **LAURA SHAW**, Chair, Alachua County Library District, District Foundation
SOL HIRSCH, Library Director
“How the Library Supports the Community and How the Foundation Supports the Library”
- February 25** **RON MCANDREW**, Retired Prison Warden, Florida Department of Corrections
“The Death Penalty”
- March 4** **JOEL DAUNIC**, Financial Representative, Guardian Life Insurance Company of America
“Some Special Ways Generations Connect Overseas”
- March 11** **DAVID CHALMERS**, UF Distinguished Service Professor, Emeritus
“Town and Gown in the 1960s”
- March 18** **KATHLEEN DEAGAN**, Distinguished Curator of Archaeology, Florida Museum of Natural History
“St. Augustine’s Past”
- March 25** **PARKER SMALL**, Emeritus Professor of Pathology, Immunology and Laboratory Medicine, UF
“Influenza: The Disease and Alachua County’s Response”

Campus USA Credit Union Donation *Larry Scott, CEO of Campus USA Credit Union, has provided \$500 to RFUF for coffee and doughnuts for the 2008-2009 year. The RFUF thanks Larry and Campus USA Credit Union for their generous donation.*

April 1, 11:45am
Paramount Plaza
Hotel and Suites

Spring LUNCHEON Speaker: Dianna Morgan, Chairperson,
UF Board of Trustees
University of Florida: Our Challenges and Opportunities

Awards and Honors

- ◆ The 2008 Volvo Environmental Prize has again gone to a UF Professor. In 2006 Dr. Carl Walters won the award; this year the award went to **DR. CRAWFORD “BUZZ” HOLLING**. Both professors now live in Cedar Key but taught at UF for many years. A panel of international scientists seeks, for these awards, those who have made outstanding contributions to protecting the environment. Dr. Holling is known internationally as the father of resilience theory; the capacities the environment has to deal with change, to withstand climate or economic shock and to rebuild, i.e renew itself. Dr. Walters’ work for which he received the prize two years ago represented a revolution in the study of complex dynamic systems. His approach spawned Ecosim, a modeling framework to predict ecosystem changes. Ecosim is currently in use around the world.
- 
- ◆ **DR. KATHLEEN DEAGAN**, Distinguished Research Curator of Archaeology at the Florida Museum of Natural History received the Order La Florida award for outstanding community service.
 - ◆ **DR. JONATHAN EARLE**, Associate Dean Emeritus of Student Affairs in the College of Engineering received a Presidential Award for Excellence in Science, Mathematics and Engineering Mentoring from the NSF.
 - ◆ **DR. JOHN HARVEY**, Executive Associate Dean of the College of Veterinary Medicine received the Lifetime Achievement Award from the American Society of Veterinary Clinical Pathology.
 - ◆ **DR. SO HIRATA**, Assistant Professor of Chemistry received the HP Outstanding Junior Faculty Award given by Hewlett- Packard and the American Chemical Society.
 - ◆ **DR. STEVE PEARTON**, Professor of Material Sciences and Engineering received the Institute of Electrical and Electron Devices Society’s J. J. Ebers Award, the third UF Professor to receive the accolade.
 - ◆ **DR. STANLEY KIM**, a surgical resident in the College of Veterinary Medicine, received first place in Small Animal Residents’ Forum Presentation Research from the College of Veterinary Surgeons during their Outstanding Surgical Resident’s Award Program.
 - ◆ **COACH BECKY BURLEIGH**, UF’s Head Soccer Coach was named the Southwestern Coach of the Year. This is the third such honor for Coach Burleigh who also won the award in 1996 and 2000.
 - ◆ **DR. SANFORD BERG**, Distinguished Service Professor in Economics was inducted into UF’s Academy of Distinguished Teaching Scholars, received the Outstanding Faculty Award for 2008 and was honored as the Core Teacher of the Year.
 - ◆ **DR. ANDREA GREGG**, Director of the UF College of Nursing’s Jacksonville campus was elected president of the Florida Nurses Association.
 - ◆ **DR. JOE JOYCE**, IFAS Executive Associate Vice President for Agriculture and Natural Resources, was named to Florida’s Environmental Regulation Commission.
 - ◆ **DR. KENNETH LOWMAN**, adjunct Finance Professor in the College of Health and Human Performance was selected by the US. Department of Education to serve on its summer Institute Planning Committee.

Student Honors and Awards



Four College of Business students won over 11 other international students in the Asian Business Case Challenge hosted by Singapore's Nanyang School of Business.

The UF Trial Team from the College of Law beat 15 other teams to win the St. John's University National Civil Rights Trial Competition.

Theresa Andrews, UF '86, a swimmer, now Vice President of the Bank of America is the latest UF recipient of the NCCA Silver Anniversary Award which recognizes student athletes who complete their college degrees and excel in their chosen profession. UF Gymnast, Ann Woods Smith and football player Jack Youngblood are former winners.

Sachio Semmoto (MSEE '68, PhD '71) has been hailed for his work in reshaping Japan's telecom industry. He is the founder-CEO of eAccess, one of Japan's fastest growing broad band companies, the first new Japanese communications company in more than a decade.

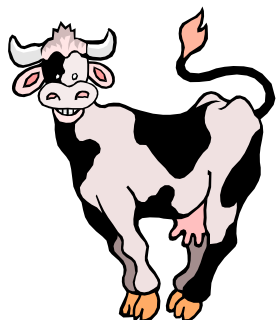
UF architecture graduate students **Christina Villanueva-Meyer**, and **Javier Fornaris** won first place in the international design competition during the 25th annual Encounter of Latin American Students in Architecture in Guatemala City. They presented design projects emphasizing sustainable strategies for historical communities in rural Mexico.

Alachua County Environmental Treasures



For almost a decade, Alachua County's environmental staff has worked with IFAS faculty and most recently with the faculty from the Law school to protect its treasures. These areas exceeded almost 16,000 acres to date. For example, Barr Hammock, a land bridge between Levy Prairie and Ledwith Lake is protected, as are the areas' water resources. River Styx,

which connects Lochloosa Longleaf to Paines Prairie; Barry's Ranch, a gopher tortoise integration park; Lake Alto which will create a scenic 12 mile canoe and kayak trail to Lake Santa Fe. For all these and more, Tom Toad, as well as other threatened species send along their thanks to the faculty and citizens of Alachua County.

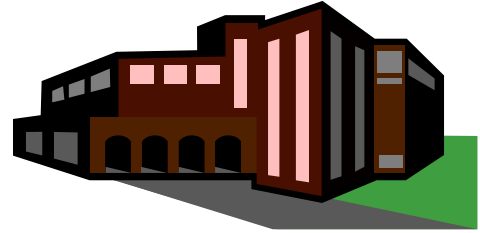


Space Cows

Can we expect to see cows in space? Dr. Peter Hansen, Animal Sciences Professor has sent several hundred fertilized cow eggs aboard the Space Station Endeavor. He said the research will show the effects of gravity changes on embryos. If we did want to reproduce in space, these effects would have relevance.

New Buildings

- If you have been parking in the lot east of Criser Hall or in the lot north of the Chemistry building on Buckman Drive, you will have to find a new place to park or you will have to get a bike. The Business College is constructing its fourth building on the Criser Lot and Chemistry is building on the Buchman Lot. So good luck! Save gasoline and get your daily exercise!
- On a happier note, the Harn Museum of Art plans to add 22,000 square feet, a two story addition on to the Museum for its Asian Collection with an Asian Garden on the west side between the museum and the street.
- There will soon be a “Shands” for the animals, a new small animal hospital is being built for the College of Veterinary Medicine. If you have ever taken your cat to a waiting room at the Vet Medicine Hospital and had the poor thing suffer a nervous breakdown in a room full of barking dogs, fear no more. There will be separate waiting rooms for Kitty and Bozo.



Fundraising 2008-2009

The University of Florida is over halfway to its goal of \$1.5 billion. The College of Medicine has raised over \$100 million; IFAS and the Business College, at close to \$70 million each, are the largest gainers in funding, followed by Engineering and LAS at almost \$40 million each.

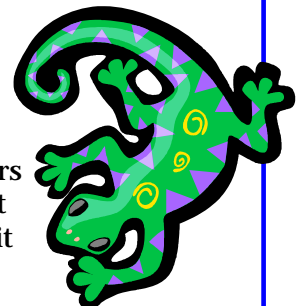


UF's World Renown

UF has one more ranking over which to obsess: US News and World Report has provided an annual ranking of universities throughout the world. UF ranked 165 in the list of 200 universities, between Simon Frazer University in Canada and Chulalongkorn University in Thailand. Sixty universities in the US made the ranking with Harvard leading the list.

Exciting New Research

When the salamander loses a leg, it grows another one. Humans can't do that...YET. But we do regenerate lesser parts every day. Scientists in the UF Brain Institute have joined forces with 150 scientists across the country who have put aside their egos to join forces. They are looking for techniques, drugs, growth hormones and other factors that will tell your body to regenerate more and better. The project has garnered about \$7 million in start up funds. The research may not produce a Fountain of Youth, but it may be extremely useful to many folks, especially the returning veterans of war.



FALL EXHIBITS AT UF



- ☞ If you haven't seen the *Promises of Paradise: Staging the Mid-Century Miami* at the Harn Museum, be sure to stop by before January 25th. The exhibition showcases the architectural design, furniture, textiles and art of South Florida's most talented innovative designers.
- ☞ Two other exhibits at the Harn that you don't want to miss: *Reading African Beadwork: the Historical and Cultural Contexts of Bead Use*, 100 masks and sculptures and finally, an exhibit of contemporary art, including 30 recently acquired photographs by Andy Warhol.
- ☞ Smathers Library East will feature an exhibit on Cuba: Past, Present and Future from January 9 to the 23rd. And mark your calendars for March 22 when the Library, in cooperation with the Florida Museum of Natural History, will feature an exhibit of sample materials from the Archie Carr Collection, followed by a talk by Frederick Rowe Davis, Associate Professor, FSU, author of the book, *Archie Carr: The Man Who Saved the Turtles*.
- ☞ The Florida Museum of Natural History this spring will feature an exhibit where you can "experience the awe-inspiring, yet fragile everglades," including large format photography of a journey through the "River of Glass" and a display of plants and animals that threaten the everglades, including a live animal exhibit! Learn how the top ten exotic invaders are overrunning the landscape.
- ☞ On April 18th, celebrate Earth Day with live music, games and econ-friendly craft activities. Find out about conservation and how you can get involved.

Fun Facts about UF

- ✦ If you want to hear what the Swamp sounds like on a football Saturday, visit www.gatorzone.com and click "Fan Central," then "Songs/ Cheers."
- ✦ There are about 100,000 bats in the Bat House on Museum Road. The Largest Colony of its kind in the US. Check it out at dusk and remember to duck!
- ✦ The Century Tower Carillon is 61 bells strong, the largest of which is 7,000 pounds. The lunch hour recitals are by a professor or student who makes the 11 storey climb to the keyboard or clavier.
- ✦ The Krishna lunch line on campus now has the musical Hare Krishna chant of Purusartha Das who accompanies himself on a hand-operated pump organ, with a friend singing along and tapping on the drum.

In Memoriam

We regret to announce the departure from this life of our retired colleagues.

Felix Berardo
Sociology

Richard E. Bradley
Veterinary Medicine

Glenna Carr
Education

Anita Lee Daniels
CLAS Writing Program

Dexter Deloney
Law

James Doyle
Medicine

William Drummond
Education

Sidney Friedlander
Medicine

Jacquelin Goldman
Clinical Psychology

James A. Hines
Veterinary Medicine

William Howard
Finance

Sidney Marshall
Dairy Science

William A. Naetzel
Health and Human Performance

Ralph G. Selfridge
Mathematics

James I. Staff
Medicine

Arnold Wertala
Music Education

Walter Weyrauch
Law

William Woodruff
History

MEMBERSHIP

If you aren't a RFUF member -----yet !

The University of Florida Foundation's listing of UF retired faculty and administrators numbers 500 of us living in the Gainesville area. Those folks 55years and older who have at least 10 years of service in a department or center are eligible to join RFUF, as are retired faculty members from other universities. This newsletter is mailed to all known retired faculty living in the Gainesville area even if they are not current members of RFUF. If you haven't joined us, we would like to invite you to attend one or more of our meetings this spring as our guest. Have a cup of coffee and a donut, some good conversation with friends and hear a great talk.

We are sure that a couple of visits will convince you to join us as a regular member. The annual dues are only \$15 and we meet at the Harn Museum every Wednesday during the academic year. We begin with coffee, donuts and conversation at 9:30 am and the meeting begins at 10am . We adjourn no later that 11am. Check out the schedule printed in this newsletter and come join us.

The Spring luncheon will be held on April 1 at the Paramount Hotel. The speaker will be UF Board of Trustees Chairperson Dianna Morgan. You will receive a reservation form in March.

We use the "address label" to advise our members whether or not their annual dues are up to date.

Date on Mailing Label

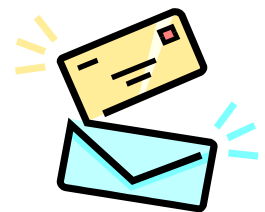
09/30/08 or earlier

09/30/09 or later

Take this Action

Pay \$15 (1) year's dues

Your dues are paid up or ahead



Please use the form on the reverse page of this newsletter to submit your dues.



Check out Our Website: www.retiredfaculty.ufl.edu



RFUF

Retired Faculty of the University of Florida, Inc.
PO Box 15544, University Station
Gainesville, FL 32604-1554
Address service requested

PRESORTED STANDARD
U.S. POSTAGE
Paid
Permit No. 1
GAINESVILLE, FL

RFUF Spring Luncheon
April 1, 2009

RFUF members will receive a luncheon reservation form in a separate mailing.

**Please send your
dues to: RFUF,**
PO Box 15544
Gainesville, FL
32604-1554

RFUF Annual Dues 2008/2009	\$15.00
Amount Paid \$ _____	
Name: _____	
Address: _____	
_____	Phone: _____
E-mail Address: _____	
Retired from _____ Dept. _____	